

Chapter Members of:



MODEL A TORQUE

Month: March 2019

Issue Number: 2019/03 Season: Summer/Autumn



Errol in his Closed Cab Pick-Up at Ellerslie

(Photo courtesy David Mossman)

Welcome to the North Island Model A Ford Club Inc.

The purpose of our club is to enjoy, restore, preserve and protect the Model A Ford automobile and to foster a spirit of good fellowship and family participation through the use of the Model A Ford.

Membership is open to anyone with a sincere interest in the Model A Ford. Ownership is not a prerequisite.

Website: www.modelafordclub.co.nz

Inside this Issue:

- Club Tech Night: Wednesday 13th March – Carburetors
- Club Run: Sunday 17th March – Paddy's Run (Page 5)
- Upcoming Events (Page 4 to 6)

“A” Captain’s Comment

Motoring with a difference. The musical orchestral sounds of steam were an enlightening lift in the atmosphere on board the Steam Tug William C Daldy. Cruising the Auckland Harbour and Rangitoto Channel in the sunshine last Sunday was an enjoyable experience while reminiscing about the talents and fortitude of our early pioneers and the crew delivering the boat from Scotland to Auckland. Yes, she was a



dedicated workhorse on the water for many, many years during my younger days and still is a Grand Lady on the Auckland Harbour. Thank you, Rob for your efforts organising such a wonderful club day.

Back on dry land it is indeed time to be putting the finishing touches to the cars in preparation for the long journey south to Te Anau. With the roll out now only a few weeks away, reservations booked, butterflies in the stomach and a full tank of fuel time is upon us. Enjoy the travel, drive carefully and safely and we will see you down south. Cheers and safe happy motoring.

The year is moving quickly with 2 months gone already. Keep those ideas for our club anniversary coming in as we progress towards it as there is significant planning and preparation still to be done. The events calendar for this year is rapidly filling with varied and interesting activities so make sure you check what’s on and where / when in the coming newsletters or the website.

Let the caravan roll. Te Anau, here we come.

Cheers, Hugh Hulse

Officers of the Club/Committee

Position:	Name:	Contact details:
Club Captain	Hugh Hulse	Phone 021 599 981 Email: gatland.park@xtra.co.nz
Vice-Captain	Errol McAlpine	Phone 027 4543 983 Email: errolmac@xtra.co.nz
Secretary	Karen Thomas	Phone (09) 443 5253 or 027 419 0191 Email: mosseykar@gmail.com
Treasurer/Memberships	Ralph Levinson	Phone 021 1727 637 or (09) 578 3000 Email: ralphlevinson1@gmail.com
Newsletter Editor	Kay Palmer	Phone 021 0731 542 Email: nimafc@outlook.com
Committee (Event Co-ordinator & Tech Nights)	Bruce Stratton	Phone 027 485 3634 Email: brucestratton@xtra.co.nz
Committee (Club Records & Assets)	John Castle	Phone 021 957 032 Email: jmcastle@xtra.co.nz
Committee (Event Co-ordinator & Tech Nights)	John Ross	Phone 021 437 267 Email: jr@acrostic.co.nz
Committee (Club Health and Safety)	Andrew Costello	Phone 021 943 063 Email: gizmoccat@slingshot.co.nz
Historian	Paul Smith	



Treasurer's Report ... and other stuff

Hello fellow Model A'ers

All the Club bills are paid, we're in good shape financially and there are just a few annual subs outstanding. The Club recently bought an excellent stainless steel barbecue (replacing the inexpensive-but-not-so-efficient one used at the Onehunga Beach evening and since fully refunded by Bunnings).

Some of our members travelled to Napier's Art Deco Festival in February. Despite Ford Model A's now being around 90 years old, they

can handle the trip from most points in the North Island in a day. I have 1950s memories of the billowing pumice nightmare of a road between Taupo and Napier, especially north of Te Pohue where my parents ran the general store. So it was interesting recently to pick up *The Veteran Years of New Zealand Motoring* by Pam MacLean & Brian Joyce, published 1971. Compared with modern day travel, our early veteran motorists were true pioneers, often wearing goggles, oilskin coats and without the protection of even a windscreen. Here are some excerpts from the book, describing pioneer travel to/from Napier in 1903/4.

In August 1903 Arthur Cleave drove from Auckland to Napier in his 5hp Locomobile Steamer, taking 8 days. En route to Rotorua –

A slippery climb through the Mamaku Bush ensued with the Locomobile becoming hopelessly bogged in two and a half feet of mud. With the help of nearby sawmill workers, they extricated it, but continued to experience atrocious conditions until reaching Rotorua late that night after covering only 37 miles in 18 hours.

Until it was sealed in the 1960s, the Taupo to Napier road was a difficult drive and in 1903 it was mentioned with trepidation even by experienced coach drivers. On the flat pumice roads between Rangitaiki and Tarawera they made reasonable time, and the next day climbed the dreaded Turangakuma Range without too much difficulty, although the speed of the low-powered Locomobile was slow, especially on the four and a half mile descent. After stopping overnight at Mohaka they left next morning for Napier, with the little car keeping up a steady pace.

In 1904 a Napier couple, Mr & Mrs H. F. Butcher, drove two 5hp Oldsmobiles to Rotorua, via Taupo. Mrs Butcher's car was the faster of the two and with its curved dash, was known in Napier as the 'Reindeer'.

Preparation for the trip involved sending petrol ahead, for supplies were non-existent between Napier and Taupo. All went well till they were just short of Taupo, when Mrs Butcher struck a deep rut and the tiller was torn from her grasp. The car left the road and collided with a poplar tree, fortunately with little damage. She reversed out and the couple continued their journey.

A trip from Napier to Taupo was only possible in summer, and even then a heavy fall of rain would render the clay and pumice roads impossibly slippery. The Butchers in their 1902 models took two days over the trip.

These and other stout-hearted pioneers drove their early imported cars to and from Napier, using tracks intended for horse-drawn vehicles. Just imagine!

Best wishes




Ralph Levinson

Upcoming Event Calendar

North Island Model A Ford Club Events – confirmed dates as follows.
The calendar will be updated as event details are finalised for publication.

Don't forget your attendance at these Club Events also counts towards the 'Attendance Cup' which is presented at our Annual Club Prize Giving later in the year.

For any new members to the Club – please come along and meet our friendly group of Model Aers.

<p>Wednesday 13 March 2019</p>  <p><i>Image - Automotorpad.com</i></p>	<p>Club Tech Night- Carburetors Time: 7pm start (allows time for Auckland rush hour traffic to ease) Please bring: Packet of biscuits or cake to share. Tea/Coffee provided. Where: VCC Club Rooms, 39 Fairfax Avenue, Penrose</p> <p>Enquiries: Bruce Stratton Ph 027 485 3634</p> <p>An informative night, run by NIMAFC members – a casual gathering to share knowledge, ask questions etc. Come along grab a cuppa and socialise amongst fellow Model Aers.</p>
<p>Sunday 17 March 2019</p> 	<p>Paddy's Run – see full details Page 5</p> <p>Drive to Awhitu Peninsula for a BYO picnic lunch.</p> <p>Meet: Caltex Service Centre, Bombay for a 10am sharp departure</p> <p>Enquiries: David Mossman Ph 0272 444 350 or dsmossman@xtra.co.nz</p>
<p>Wednesday 15 May 2019</p> <p>Mid-week Club Run</p>	<p>Top Notch Macadamia Farm – Morrinsville, Waikato A visit to a Macadamia Orchard, including panoramic views of the Hauraki Plains and Coromandel Ranges. More details to come.</p>
<p>Saturday 15 June 2019</p> 	<p>Ryders Mid-Winter Christmas Movie Night A fun popular club event repeated at a unique private theatre in West Auckland. Scrumptious dinner cooked on the coal range, followed by a movie in the adjacent theatre.</p> <p>Definitely don't miss this - Secure the date in your calendar now – further details to come – Keep an eye out in the Upcoming Club Newsletters for more information closer to the date.</p>
<p>Wednesday 3 July 2019</p>	<p>Club Tech Night – Vintage Speedway – Richmond in Auckland An opportunity to view Vintage Speedway Memorabilia.</p> <p>This is a must see!</p> <p>Club Contact: Andrew Costello</p>



JOIN US ON PADDY'S RUN

Sunday 17 March 2019

Depart 10.00am

for

AWHITU PENINSULA

Awhitu means "place of longing" in Maori. With breathtaking views, good sealed roads and a historic, beautifully restored lighthouse to reward you at the end, it's no wonder it has become such a favourite Sunday drive destination

We will drive past the Pukekohe paddocks then through historic Waiuku until signs to the lighthouse clearly show the way to the tip of the peninsula. The Sky Tower pokes through in the distance and a whole new perspective on Auckland can be seen as you drive past trees so windswept they are growing almost horizontally and hills so green and so rolling they give you vertigo.

Come along and join Paddy on his Shamrock of a run and enjoy a Guinness when you get there.

- MEET:** Caltex Service Station, BOMBAY
- TIME:** As long as you are ready for a 10.00 sharp departure.
- WEAR:** Anything as long as it is GREEN. You may dress the cars also.
- BRING:** Picnic blanket, table, chairs and picnic lunch. BYO refreshments also.
- ACTIVITIES:** Paddy's surprise with prizes to be won.

Don't think about this one – start packing the car now – Paddy and his Leprechaun are waiting.

Any communication to David Mossman – 0272 444 350 or email: dsmossman@xtra.co.nz

May the
Luck o' the Irish
be with you!



Club Events – the year overview

May 2019

- Sunday 5 May – Club Run
- Wednesday 15 May – Mid Week Club Run

Sat 15 June 2019

Club Mid-Winter Christmas



July 2019

- Club Run (Proposed Competitive Run to count towards Club Trophy)
- Wed 3 July - Club Tech Night

August 2019

- Club Run
- Club Tech Night
- Club Prize giving Dinner

September 2019

International Model A
Ford Day Celebrations

Other Events of Interest

Southern Lakes Te Anau 14th Model A National Meet

Monday 15th April to Friday 19th April 2019

Late registration enquiries to southernlakesmodela@gmail.com



McLean's Island Swap Meet

Friday 11th October to Sunday 13th October 2019

THE ELLERSLIE CLASSIC CAR SHOW

SUNDAY 10 FEBRUARY 2019



The show stealer – 1930 Closed Cab Pickup Truck

It certainly is a pleasure to see the classic car nuts featuring their vehicles alongside so many other treasures in such a glorious setting. After last years washout the organisers were certainly looking for a sunny day. They were not disappointed as it was a fantastic day with many car enthusiasts bringing along their families to view the wide variety of vintage and classic cars on show.

The Club had on show a Cabriolet (Alex and Daphne Wilson); Roadster (Stuart and Diane Jordan); Fordor (Hugh and Anne-Marie Hulse); Tudor (David Mossman) and Closed Cab Pickup (Errol McAlpine). The pickup was the 'Survivor' of the day drawing much attention, so much so that the organisers wanted to know why we

hadn't entered it into the Survivors Class. Thank you to all the members who made themselves available.

The Model A's drew a lot of attention from various people and we were kept busy with the many questions asked. This day proved again that there are a lot of people out there interested in Model A's. Some of the hilarious stories people were recalling about their parents or grandparents in the good old days were a pleasure to hear. David Mossman allowed 8-year old Lucas to sit in his Tudor and start the engine in front of his parents – this will be something he will remember for a long time, the smile on his face said it all.



These days are valuable in promoting the Club and it was great to mix and mingle with many enthusiasts.

Art Deco Festival Napier, NZ

by North Island Model A Ford Club Editor, Kay (Photography by Stephen Upson)

Due to work commitments, we caught a flight from Auckland to Napier arriving on Valentine's Day, Thursday 14th February 2019, rather than driving the Fordor.

Our Air NZ flight took in some amazing scenery, it felt like a special scenic flight, as we flew over Lake Taupo and finally into Napier, arriving around 2pm.

Our accommodation was at beautiful Ahuriri, where we joined up with group of North Island Model A Ford Club members – a group of 10. The gathering on the deck overlooking the sea grew, enjoying drinks and nibbles. Ahuriri is one of the first areas to be settled in Napier, old fisherman's cottages, industrial warehouses, a seaside boardwalk and Art Deco architecture.



On Friday 15th February, time to dress in Era attire and drive to the VCC Club Rooms ready to start our 'Touring Rally'. Pam and Tony's Tudor was our Rally car for the day (Club Members, Taupo). The drive took around 2 hours, taking in the lovely NZ countryside and vineyards, of Havelock North and Napier surrounds. We arrived at our picnic lunch spot, a Homestead with huge beautiful trees to keep us shaded from the hot sunshine. Picnic blankets were set out on the sprawling lawn and picnic food and drinks were enjoyed by all.



Then time to explore the property and hear the history of the Homestead. The men were in heaven, as they headed to the rear of the property to view the neat and tidy multiple garages housing an impressive car collection.

Following lunch, it was time to drive back to Ahuriri. Then in the evening into Napier town to join in the Art Deco style festivities, including the Navy band playing in town.

On Saturday, Era outfitted again, for a drive into the VCC Clubrooms for a morning tea. Amazing cakes and sandwiches, tea and coffee. Vintage cars registered in the midday parade then headed off to town. It was back to Napier again to set up a picnic on the seaside. A wonderful sunny day, to watch the car parade through town, and get involved in the atmosphere reminiscent of the 30's era. Whole families were kitted out in Era fashion, including a baby I spotted in a pram. It was so great to see the locals and visitors embracing this elegant era and appreciating the vintage cars on display.

Art Deco Festival Napier, NZ -- continued

On Sunday, we were treated to a BBQ breakfast outdoors at the VCC Clubrooms. A jazz band played on the deck, which added to the ambience. Then a total surprise, as we then heard the bagpipes playing. A full pipe band, was in formation walking up the driveway. The band entertainment continued for all to enjoy, with lots of well known melodies.



Then the Model As and passengers left for a short tour up to Te Mata Peak to take in some breath taking views over Napier and Hastings. Coffees all round, by our waiter, Mr Driver.



Then on wards to the Church Road Winery for lunch. A beautiful setting for delightful food matched with wine.



Our breakaway finished up on Monday, as we said our goodbyes and the Model As departed into the distance, for the trip home. Unfortunately one Model A Coupe needed a piggy back to Auckland.

What a fantastic festival, and fantastic company amongst Model A friends – if you are thinking about attending, do so, it's an annual event to a beautiful part of New Zealand.

Kay & Stephen



**A few photos from the recent 'William C Daldy'
steamship cruise on the Auckland Harbour – Sunday
24th February 2019**



More to come next Newsletter



Club Member, fireman Rob Brown shovelling coal, whilst the rest of the Club was up on deck enjoying the cruise



Thanks Rob, an enjoyable day

From the Era Fashion Files

Ladies, start preparing your outfit for the National Meet, Te Anau in April.

Seen here, a sequinned long evening dress, drop waisted with a tulle skirt.

Add your accessories, such as head band, gloves, long beaded necklace, handbag, stockings and shoes.



A tip from your Editor

Look out for a cardboard hat box – approximately \$15 at a shop in your suburbs (found in an Auckland store that stocks varied items (aka \$2 style shops)).

Perfect to store and transport your Era Fashion items.



Model A East Cape Tour – submitted by Club Member Keith Humphreys

29th Jan. 2019 ANNIVERSARY WEEKEND

Max & Shirley Belcher arrived at our place Thursday evening in their Model A and at 5:30am Friday morning we set off for Tokomaru Bay on the East Cape. We went via Rotorua and just South of Tirau we tried to drive a road over the Mamaku's, parallel to the State Highway, and despite "No Exit" & "Road Closed" signs, which are only a challenge to Max, we got quite a long way before a forestry worker assured us that there was no way of getting through.

So it was turn back and stay on the main highway. After Whakatane and Opotiki we went on the Motu Road, a narrow, winding gravel road through wild country. Unfortunately, with me driving and the road very narrow, we met a modern 4WD on a blind corner and had a coming together which resulted in minor damage to two mudguards and a big dent in his plastic bumper which Ker plinked out showing no ill effects.



Finally arriving at Whakatane we drove up the coast to our Air B&B at Tokomaru Bay, an old two bedroom villa with a superb outlook over the bay, but with a toilet cistern that was painfully slow to refill and one bedroom only accessible through the other bedroom. Arriving around 6:30pm we had been on the road for 12¾ hours, stopping only for Breakfast and lunch. Fortunately, we share the driving, but it's a long day to be in a vintage car. Dinner was had in the very good Tokomaru Bay pub.

The owners of the Air B&B dropped in four crayfish in compensation for the unsatisfactory toilet & bedroom situation.

Saturday was spent exploring Tologa Bay and Tokomaru Bay looking at enormous piles of logs washed down in past storms, ruins of freezing works and wool warehouses and very long jetties.

The temperatures were high and we had to keep covered up to prevent burning

Around 9:30 Sunday Morning we set off around the coast, stopping at Te Araroa to park under NZ's largest pohutukawa. Turning off on a blind corner to visit the historic church at Ruakokorea we narrowly avoided being wiped out and then lunched at Opotiki. By 4:30 we were at Ross & Julie Bryant's home in Te Puna where we enjoyed a relaxed evening and partaking in the fresh crayfish.

The next morning, Monday we called in to swap the alternator I had bought for the SP250 with the dealer just down the road and caught up with Di's mum.

We chose to go over the Kaimai's, up to Te Aroha, then via Kaiarau to Clevedon and on to Otara, thereby avoiding what appeared to be heavy holiday traffic and arrived home around 3:30, 1,017 miles later, the Model A's still running strong.

Driving at modern traffic speeds in vintage cars requires total concentration and any lapse could prove painful. We did go on the bypass at Cambridge which is a first with a 110kph speed limit and the cars hummed along at that speed effortlessly, but really 90kph feels the most comfortable speed to drive at with higher speeds available with a twitch of the ankle. Di & I share the driving which reduces the stress levels but one still arrives home somewhat shattered after that sort of motoring, especially in the high temperatures experienced and the very strong wind at times.

It is apparent that as we "mature" the "I'm indestructible" gene gradually gets replaced by the "self-preservation" gene?

Photo Gallery: Model A East Cape Tour -- continued



The historic church at Raukokore stands out on a point as you drive around the bay. Access on a blind corner caused a very close shave.



Parked outside the semi-derelict wool store at Tokomaru Bay



At the summit of the Motu Road

If we don't grow our ranks who is going to take care of our Model A's when we are gone? I have been following ways of encouraging youth into our Club and thought I would begin by introducing an interesting article for you to read.

Please Don't Sell It!!

I pulled this rusty Model A Roadster/Pickup out of the barn with clear intentions to take it to Turlock Swap Meet CA to sell. After airing up the tires, cleaning it up, adding new gas and a battery, it started and ran just fine. My grandson came over to see what I was doing and immediately asked if he could give it a test drive. He helped give it a safety check, adjust the brakes, and check the fluids in the transmission and differential then he drove it around our walnut ranch.



Evan Bockman lives in Visalia, CA and is 15 yrs old and already has a nice 30' Tudor which he plans to drive to high school as soon as he gets his driving licence next year. He already put a new engine in his Tudor, adjusted the brakes, added seatbelts, and gave it a good cleaning and service.

When he saw this very original roadster pickup his eyes lit up and he could see an opportunity to have a very original car that would be more fun to drive than his nicely restored Tudor. Evan was even

more interested in the car when I told him that many people would make a truck out of their cars to help them on their farm and also to be able to get rationed gasoline and tyres during the war years.

I think Evan gave all his cousins, his mother and grandmother a ride in the roadster pickup and explained to each one how to turn on the gas, start the motor and double-shift the transmission. Before he put the car away back in the barn, he said "Please don't sell it Grampa". Of course I could not sell it after seeing how much he enjoyed an original Model A. *Written by David Bockman Visalia CA*

By now I think we all agree that the YOUTH are the future of our hobby. Taking the grandchildren for a ride in the Model A, maybe stopping for an ice-cream, is great. Encouraging the 15-25 year olds to consider the Model A as they enter their driving years is very important as well. But as we look around at our membership and demographics, let's not ignore an important trend — yes, we are getting older, and the youthful members of our club are in their 50's! In many cases, folks in this age range have raised their children, could have a few dollars of expandable income, and/or may be looking towards retirement. Maybe these are the people we should also be looking at to promote the old car hobby while boosting our membership. So if you have friends, relatives or co-workers that show even the slightest interest in the Model A, pull them aside and explain how easy and economical it can be to get started in this favourite pastime. Give them a ride, show them the Model A Torque, and invite them to an event. If we don't grow our ranks, who will take care of our Model A's when we're gone.

Thanks Joe Fox, OH

Submitted by Karen Thomas, Secretary



Snippets

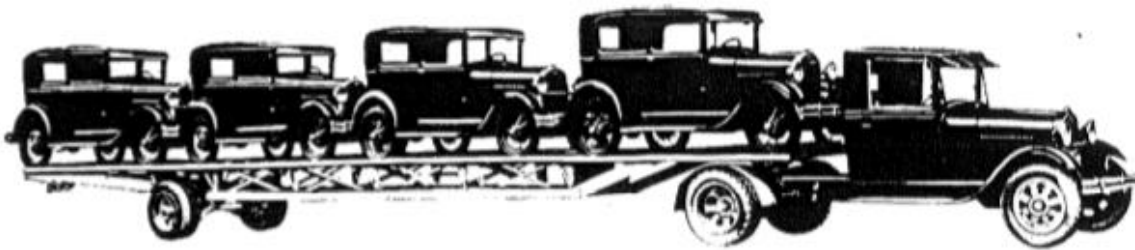
17 November 1986 – Introduction of reflectorised plates for cars and commercial vehicles. Black numerals on white background.

From Murphy's Law for Automobile Restoration (compiled by John M Spring)

- The last nut or screw is the hardest to remove
 - The part needed most often (or most desperately) is the one on back order
 - When your car breaks down on a tour, it will need the spare part you left at home
-

Are you an AA Member? It may be worth the additional benefit with AA Plus (free towing to get your disabled vehicle home or to the nearest repairer).

For Greater Customer Satisfaction—



Use **W&K** CARRY-CAR Delivery Service

Editor comment: Maybe Terry can organise a group towing deal. Hope the trip home to Auckland from Art Deco, Napier was comfortable.



SUNSHINE REPORT

With the months and weeks moving along at a fast pace and there being plenty of sunshine what else is there to say other than 'Enjoy it while you can'. Sunshine and happy thoughts make life a lot easier, its like being coated in a bubble and nothing negative can hurt you.

Diane Jordan has experienced a total hip joint replacement this month and we wish her well on her road to recovery. If there are any other club members who have been unwell or feeling poorly you also are wished a speedy recovery.

To those members who have lost a loved one we pass on our condolences and offer our heartfelt sympathy.

"Kindness means building bridges instead of walls"

Karen Thomas
Secretary NIMAFCA

Jim's technical tip

by Jim Cannon,

Radiator Hoses – Hard to Get On, Hard to Get Off!

For many years I had a hard time getting new radiator hoses on the engine to seal well. I would tighten the hose clamps to what I thought was reasonable, and they still seeped a bit of coolant. And years later, when I needed to remove the hoses, they seemed to be glued to the metal parts and I had to pry them off or cut them off.

A Master Mechanic shared his secret with me years ago. Apply a very thin coating of a specialized gasket dressing called "Hylomar AF" to the inside of the new hoses where they will contact the metal just before installing them. Install and rotate each hose back and forth, to spread the sealant out evenly. Now tighten hose clamps and you are done. It will not seep or leak. And years later when you need to remove the hose, it will come right off!

I get the Hylomar AF (Advanced Formulation) -- originally developed by Rolls Royce for their jet engines -- from an industrial supply place near me called W.W. Grainger. It's also available on Amazon and other places on the Internet. Compare prices because some places price it like it's gold!

There are several variants of Hylomar. You don't want the original "Hylomar Universal Blue" or the "Racing Formula". The Hylomar AF works best for our application. I also put a little on my oil drain plug threads, on the transmission and differential drain plugs, etc., to stop the drips. It gives a good seal but never hardens, so it's easy to take it apart later.

Have a Model A Day!
Jim

copywrite Frisco illustrationsOf.com/89401



North Island Model a Ford Club is a registered Chapter Member of the *Model a Ford Club of America (MAFCA)*.



Classified Advertisements

There is no charge for members selling their own items. Items will be advertised 3 times unless renewed or cancelled. Business size commercial ads are \$25 per year.

For business ads contact Ralph Levinson (09) 578 300.

If you have Model A parts to sell or wanted, there is space available to advertise here. Send your details via email to nimafc@outlook.com



P.C. 'You were doing forty miles an hour, Sir.
Motorist (whispering): 'Make it seventy,
I'm trying to sell the thing.'

FREE

2 x 2 gal imp. petrol cans for free.

Both need to be de-rusted and repainted, a small hole on one side of one needs soldering.

One is standard shape with no logos the other is a 2-part kiwi tank with BP on the sides.

Both have brass caps.

Contact: Trevor Farr 09 265 0431 (Botany)

AUCKLAND CAMS

www.aucklandcams.co.nz

Camshaft Machine Shop

Unit 1, 32 Moselle Ave

Henderson, Auckland

Henry van Vogt

Mobile 0274 -860400

aucklandcams@xtra.co.nz

Courier Delivery address

251 Don Buck Road, Massey, Auckland

Competition/Race/Rally/Performance Camshafts

Veteran AND Vintage
Spares and Repairs Ltd
RESTORATION SUPPLIES
TYRES & BODY PANELS
Specialist | Model T & Model A 1907-1931
16" Tyres black and white wall
Errol & Linda McAlpine
P 09 832 9818 | M 0274 543 983
E vet.vin@xtra.co.nz www.veteranvintagecars.co.nz
1127 Scenic Drive, Swanson, Waitakere, Auckland

From the NIMAFC Editor:

Thanks again for your articles and photos. Keep them coming. I really appreciate club member's involvement in the Newsletter. I have enjoyed putting this Issue together. Great stories to share!

Stephen and me had a wonderful time at the Art Deco Festival in Napier. Now looking forward to more Club Events and heading South to the National Meet in April. An Era Evening Night is part of the Meet, so I have included a few ideas for your evening outfit - Ladies let's start getting an evening ensemble together.



See photo (an opportunity for me to wear my Era nautical attire) taken recently on the Vintage Car Touring Rally, during the Art Deco festival in Napier. A special Thank You to club members Pam & Tony from Taupo - our chauffeurs for the weekend in their Tudor, driving the happy couple around.

Mark those important event dates in your calendars, and watch out as more fantastic events are publicised in upcoming Newsletters – Come along to a Model A Event soon!

Best Wishes, Kay Palmer (NIMAFC Newsletter Editor)

Editor email: nimafc@outlook.com or editor@modelafordclub.co.nz

Please send articles/reports/photos to the Editor by 15 of the month (or earlier if you can).

In Microsoft Word or directly into an email (Editor can format to publish in the Newsletter).

The views and articles expressed in this Newsletter are the views of the authors and may be reprinted provided acknowledgement is given. Where articles have been reprinted, the NIMAFC recognises those authors and thanks them for allowing their article to be used in our Club Newsletter

On a final note: (extracted from a past NIMAFC Newsletter - April 1995)

The sign of the rammer?

Drivers born under the sign of Aries the ram have the worst record for road accidents, according to a survey by British insurance company Zurich Municipal.

Arians have the most insurance claims while supposedly risk-taking Sagittarians tend to be the safest drivers.

Zurich, who say they do not intend basing premiums on birth signs, released the following league table for the highest number of insurance claims: 1 Aries, 2 Pisces, 3 Virgo, 4 Aquarius, 5 Libra, 6 Gemini, 7 Scorpio, 8 Leo, 9 Taurus, 10 Cancer, 11 Capricorn, 12 Sagittarius. — NZPA

Editor comment:

My 'risk taking' Fordor chauffeur is a Sagittarian. I wonder what star sign our 'Woody' Driver is (see photo last Newsletter)?

**On a serious note -
Let's keep safe driving on our NZ roads.**