

Ford Model A 1929

We've owned the car since 2012. This car is quite original and solid. It's not perfect, but totally usable and a nice car to drive. We've not had any trouble with it, but have done a lot of work to get it comfortable and reliable. Most of



the modified items are easy to put back to original, but are either safety or comfort improvements. The story goes: it was originally owned by 2 spinster sisters in Ashburton, then a farmer who eventually parked it up in a barn. It was then purchased (ex-estate) and put it back on the road in 1979 and was in a small collection. When the collector downsized, his daughter purchased the car and she sold it to us in 2012 at about 98000 miles. The car currently shows about 220 miles on the odometer after we passed 99,999 miles in 2017. We've only done about 2200 miles in it in the 9 years.



During that time, we have done (at least) the following:

Overhaul Transmission: rollers, seals, bearings, gaskets, gearsets and shafts. Rebuilt shift tower. Fitted an oil dipstick kit.

New Clutch plate, pressure plate, release and spigot bearings.

New Driveshaft Coupling/Universal.

New battery and isolation switch.

Radiator dismantled, rodded out and re-assembled.

New leakless waterpump, Hoses, inline thermostat, temperature gauge, aluminium fan and new belt.

Head planed with new copper Head gasket and copper spray.

New aluminium timing gear.

Sump gaskets and crank rope seals (also "Rear Main Janitor" to catch oil drips), cleaned out sump.

New Carburettor kit and Fuel tap seals

Flat Head Ted brake floaters and new shoes (This car brakes very well!!)

New Front wheel bearings and seals

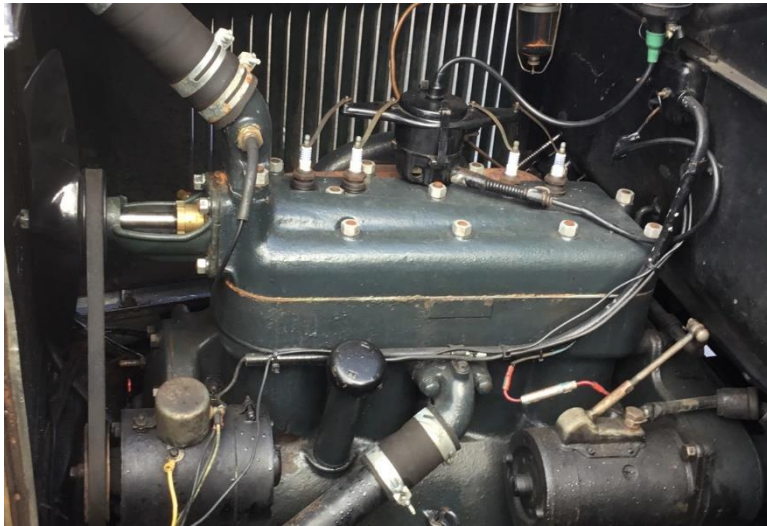
Overhauled Steering box and fitted new one-piece shortened pitman arm (lighter steering)

Front and Rear indicators fitted and 2 rear stop/tails - using a pair of original style rear lights and vintage looking driving lights up front.

Slim high mount LED brake light in rear window.

Also includes:

Original 21" wheels and a set of 16" wheels with new Bridgestone 205x16 radials and new



hubcaps (nicer for long trips than the 21's)

Rear wooden trunk

Various tools and extra parts (horn rebuild kit, tie rod and drag link kits, points etc)

small case with some old receipts and paperwork.

Hinge mounted side mirrors.

Contact: Dave & Denise

09-436 1268 or 021 232 6998

email:

deniseanz@hotmail.com

